

DEADGOAT RACING



Presents

DEADGOAT SUPERCROSS

September 9th, 2023

In the spirit of reconciliation, we acknowledge that we live work and play on the traditional territories of the Blackfoot Confederacy (Siksika, Kainai, Piikani), the Tsuut'ina, the Stoney Nakoda Nations, the Métis Nation (Region3), and all people who make their homes in the Treaty 7 region of Southern Alberta.



Registration

Registration will be on Zone4.ca opening on September August 29 at 7:00pm closing September 7th at 11:59 pm. There will be no race-day registration.

Entry fees are \$35.00 per racer in all categories.

Race Organizer - TIM BREZSNYAK, DEADGOATTIM@GMAIL.COM

KYLE HUSBAND, KAHUSBAND@GMAIL.COM

COVID 19 Precautions

- Anyone who has been in recent contact with someone with symptoms of COVID-19 may not participate or attend any events.
- Please stay at home if you are experiencing symptoms of COVID-19.
- Failure to comply with AHS/ABA regulations and/or the instructions of an official will result in removal from the event and may result in further sanctions, penalties or fines.

These precautions are in place to protect all participants and officials as everyone has a different level of risk and comfort as we progress to a back to near normal race year. We hope these guidelines will help to alleviate concerns and/or differing opinions around stages of protection from the current pandemic.

Venue



Thanks to the Seminary for allowing us to use their land to host events.

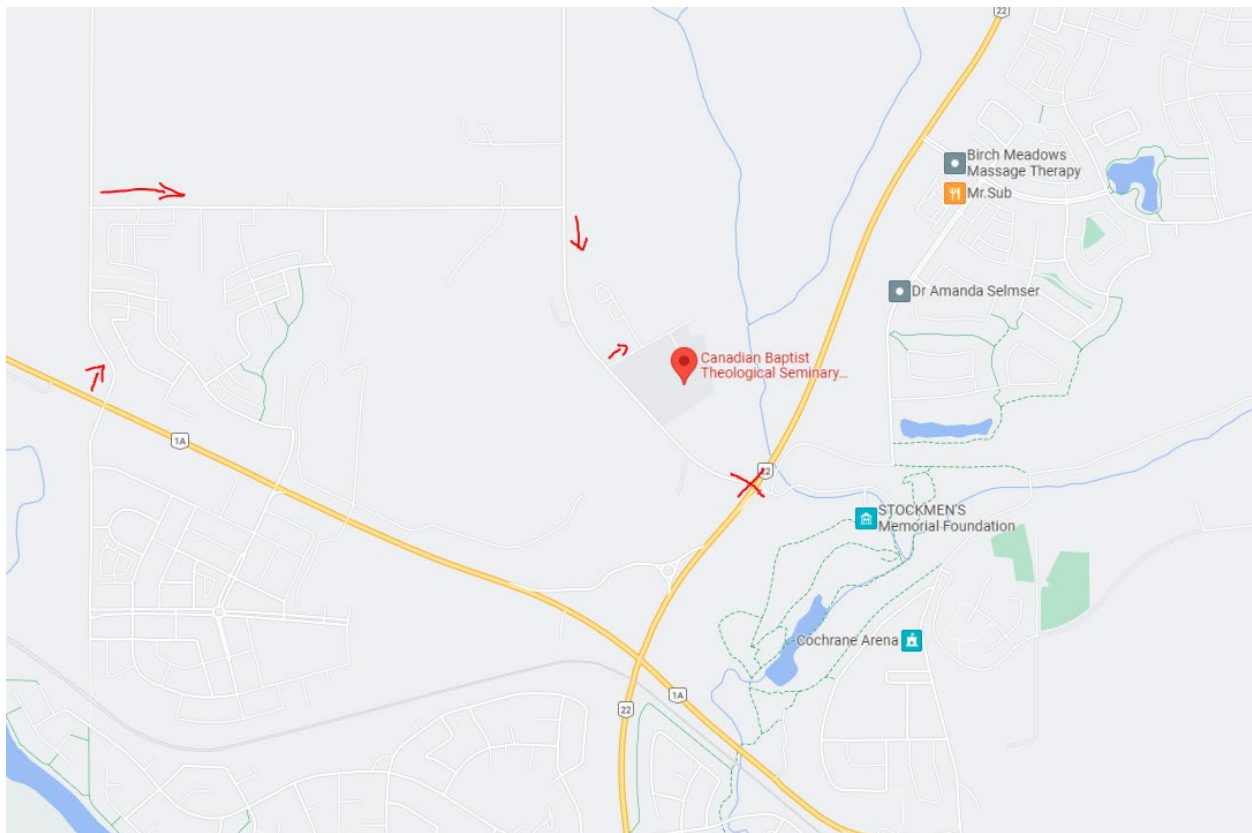
Canadian Southern Baptist Seminary located in Cochrane AB.

200 Seminary View, Cochrane AB

<https://goo.gl/maps/4eHEnus9SE38P4gZ6>

Across from the BMX and AG grounds.

Getting There:



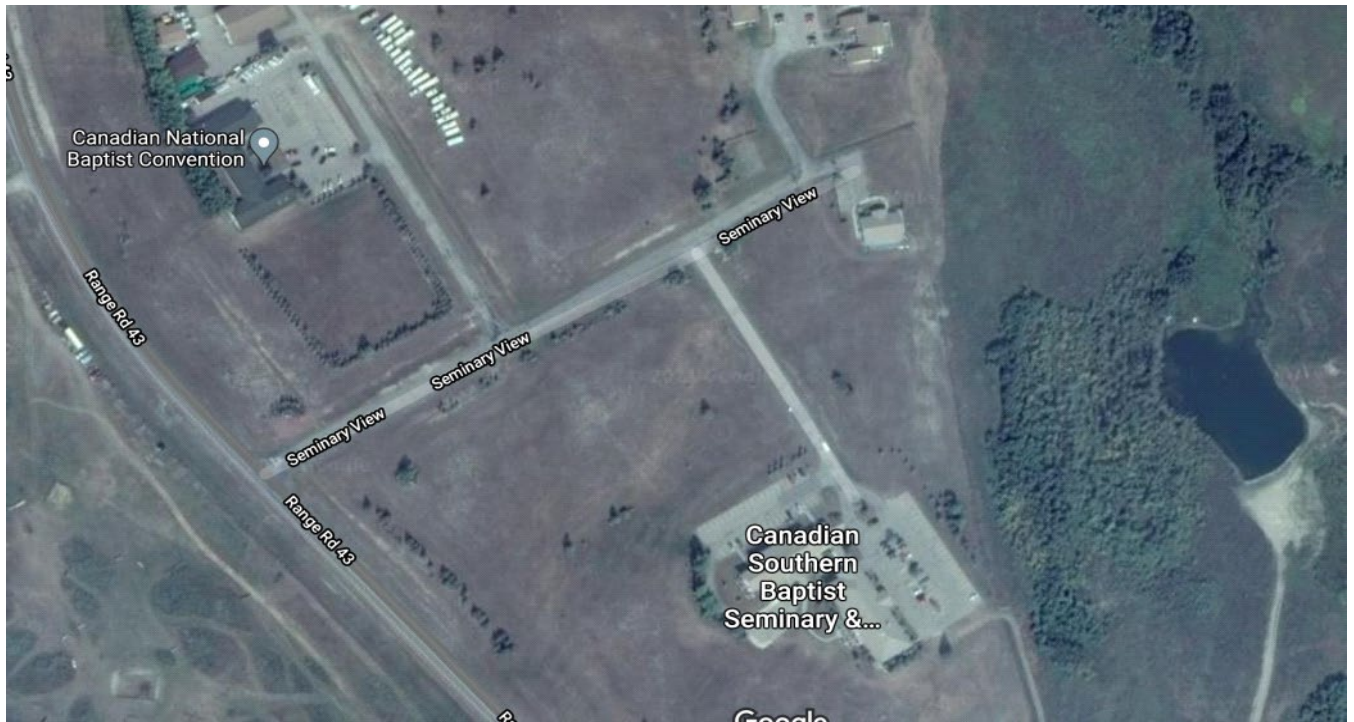
PLEASE NOTE THAT TURNOFF FROM HIGHWAY 22 TO RANGE RD 43 IS NOW CLOSED!

From Highway 1A head north on Horse Creek Rd, east on Township Rd 262, south on Range Rd 43 and then take a left on to Seminary View.

From Highway 567 go south on Highway 22, west on Cochrane Lake Rd, South on Range Rd 43 and take a left on to Seminary View

Parking:

There is lots of parking at the Seminary, please park in the highlighted areas only. Stay out of the resident's parking/street in the northeast part of the complex.



Course: (Subject to change)



Categories

Categories for licensed riders are as below. New cross racers will compete in the cyclocross category corresponding to their respective Road or Mountain Bike category, whichever is higher. Riders with a Single Event License (SEL) are restricted to the category indicated.

Cyclocross	Road	Mountain Bike
Novice Men – (SEL)	Citizen	U15, U17, Novice, Master 50+
Sport Men	Cat 4	Sport
Sport Women – (SEL)	Cat 4	Sport, Novice
Open Women	Cat 1/2/3	Elite
Expert Men	Cat 3	Expert
Open Men	Elite, Cat 1/2	Elite

Race Schedule

8:30am	Race number pick up and sign-on begins.
8:30am - 9:25am	Course Open for pre-riding
9:30am	Novice Men 40 min
10:30am	Sport Men Minimum 40 min
11:30-12:00	Kids race 30 min
12:00pm-12:25pm	Course Open for pre-riding
12:30pm	Open Women Minimum 40 min
1:30pm	Sport Women Minimum 30 min
2:15-2:40	Course open for preriding
2:45pm	Expert Men 50 min
3:45pm	Open Men 60 min

Kids race

This year we will be having a kids race on a short track course in the infield, bring your bikes and a helmet and expect to have fun. sweet prizes too. All ages welcome and entry is free for all participants.

Awards

Podium presentation will be done approx. 30 min after the conclusion of each race.

License Information

All participants must have either a current ABA or UCI race license. For those who don't have a license, Single Event Licenses may be purchased for \$20 on Zone 4 during registration.

License check: each rider must present their license to the ABA Race secretary no later than 15 minutes prior to each respective start.

Course Pre-riding

Pre-riding will start around 8:30 am – 9:25am, 12:00pm-12:25pm and 2:15pm -2:40pm
There are additional small-time gaps after each race, but all pre-riding between races is subject to ABA Commissaire approval. Do not ride the course when other categories are racing. Please only enter the course from the Finish Area to do any pre-riding.

Body Numbers, License Check & Call-up

Your ABA cyclocross numbers are yours for the season - 2 upper arm numbers and 1 body number. These will be provided by the ABA at your first race.

*Upper arm numbers: placed on upper forearm, facing forward so the officials can see them.

*Body number: placed in the middle of your lower back.

Remember to bring your own pins.



All riders will be called up for the start of each race and must arrive 5 minutes before start of race.

Bikes, Equipment & Rules

This event will be run in accordance with ABA/CCC/UCI Cycling regulations. Riders are responsible for knowing and understanding these regulations.

The ABA complies with and fully supports the UCI anti-doping regulations, the clauses of the World Anti-doping Code and its international Standards to which the UCI anti-doping regulation refer and to the anti-doping regulations of other competent bodies as per the regulations of the UCI.

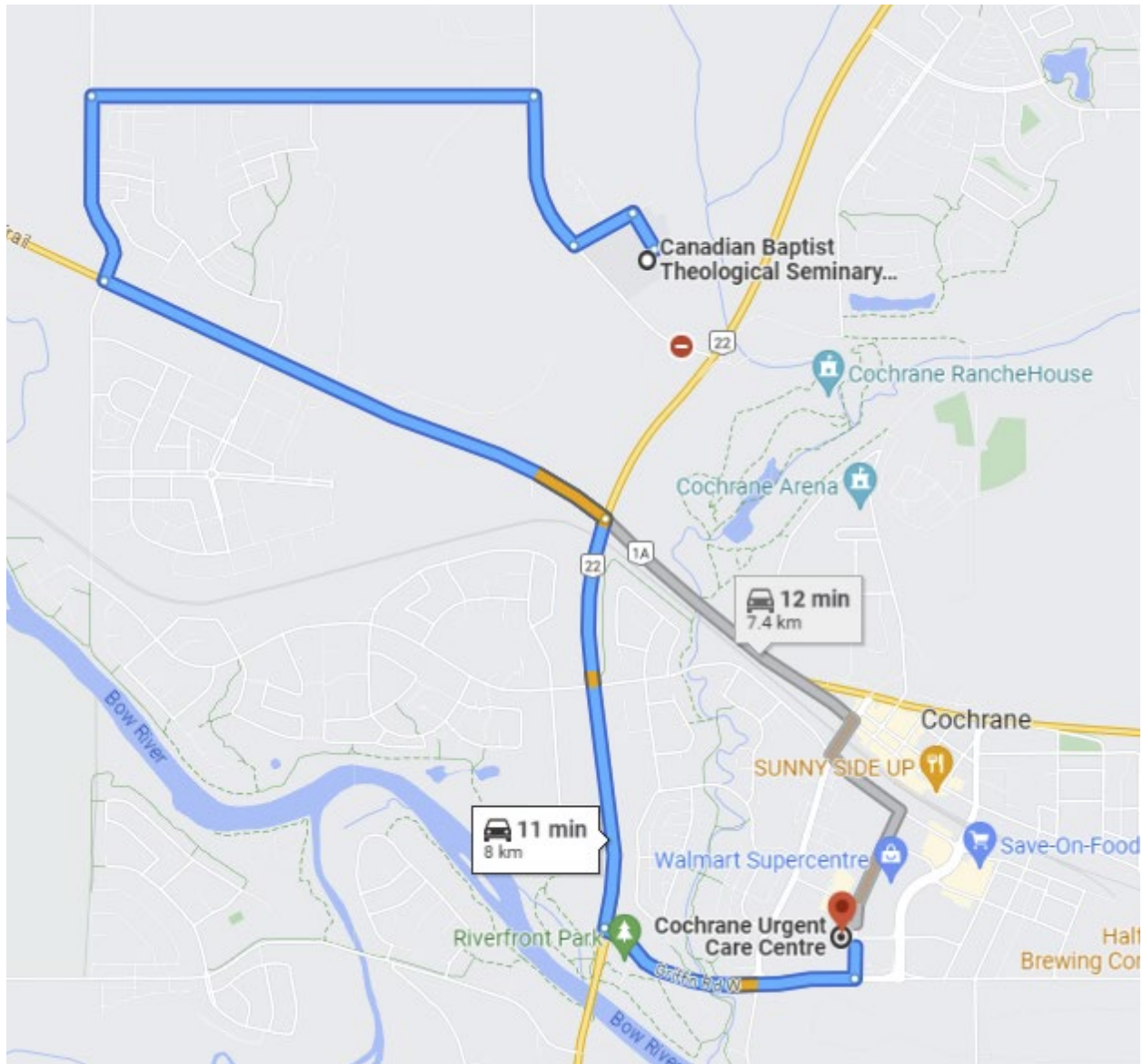
Elite Men, Expert men and Open Women and Sport Men racers may only ride cyclocross bikes. Novice Men and Sport Women Racers can use cyclocross or mountain bikes. Competitors must always wear an approved helmet while racing and riding around the grounds. Commissaires ensure only that bikes conform to the Regulations; we accept no liability for the condition of the bike. Also, the CCC does not approve helmets. Commissaires ensure that a) the helmet is intended for cycling use; and b) the helmet has been approved by some regulatory body. There is no feeding in cyclo-cross; neither is a feed zone provided. Riders may carry water on their person or their bike.

Pit Area

The race will have a Pit Area where riders can change wheels or bicycles. Make sure you label your stuff and collect it after your race. Deadgoat Racing will not be held responsible for anything lost or stolen.

First Aid/Medical

We will have medics and ambulance on-site provided by Aaron Medical. Please identify yourself to the Race Organizer or medical staff if you need assistance. Cochrane Urgent Care is approx. 8 km away from the race course.



Food, Beverage, and Garbage

Bring your own water and food. There is NO ON-SITE RUNNING WATER. We are all responsible for helping keep the racing area clean. Please throw your garbage away in the provided containers or take it home with you.

Washrooms

Porta Potties will be located near the Parking areas.

Sponsors

Huge shout out and thanks to our sponsors! Without whom we'd have nothing to ride, no java in our system, lube to go smooth and tires to go fast.

BOWCYCLE, CROWSNEST COFFEE ROASTERS, SQUIRT LUBE, SCHWALBE TIRES

