

Central Alberta Bicycle Club Presents

Presents

2009 Campus Cross Madness



September 20th, 2009

Red Deer College, Red Deer



Course: This is a really great pure Cyclocross course. As in years past, the course this year is pretty much unchanged. A 2.8km course with a 60ft sand section, grass, and a run up that offers a true test of Cyclocross skill.

Directions:

- Take Highway 2 to Red Deer.
- East on 32 Street Exit
- South at 56 Avenue / College Boulevard (the main College entrance, marked by sign).
- At the 3 way stop take a right to stay on the west side of the campus. The race will start on the south end of that parking lot at the big tent.

Parking: there is ample parking on the south west side of the college. The course cuts through the south section of the parking lot, so please park just north of the race course.

Amenities: the college will be open for washrooms, and to warm up before and after the race. If you are stealthy, you might be able to sneak in a post-race shower; bring a towel.

Registration and Sign-On:

Please use www.karelo.com - No race day registration will be available!

Please sign on prior to the start of your race in the tent at the start/ finish area. Sign-on opens at 10:00am and closes 30 minutes prior to your race

Race Fees: \$25

- All riders must have a valid UCI/CCA license. Riders who have are general members may purchase a day license for \$10 from the Technical Delegate.
- Riders are expected to know and understand the UCI [Cyclo-cross](#) rules.
- Please bring your race license, and **road racing** body numbers. If you do not have body numbers, the ABA will provide those for you on race day. Failure to bring your license will result in a \$10 fine. Position one number **down the center of your back** (so you are almost sitting on it) or both body-numbers **down low on your back pockets** so they are clearly visible from anywhere behind.
- New 'cross riders will compete in the Cyclo-cross category corresponding to their respective Road or Mountain Bike category, whichever is higher:

Road / MTB category Cyclo-cross Category:

Cat 4 and 5 / Beginner and Sport: Sport Men
Cat 3 / Expert: Expert Men
All Women's Categories: Open Women
Cat 1 and 2 / Elite Elite: Open Men

- Prizes will be awarded to the top three finishers in each category.

Bikes and Equipment:

Cyclo-cross bicycles must be used in the Expert and Elite/Open Men categories; mountain bikes are permitted in the categories of Sport Men and Women.

MECHANICAL / FEED ZONE

This is 'cross so NO Feed Zone. A mechanical and/ or warm up tent will be available to racers near the start finish area. Please be sure to label your gear, and remember to collect it after racing.

Start Times:

Sport Men:	11 am	40 min
Open Women:	12 noon	40 min
Expert Men:	1pm	50 min
Open Men:	2 pm	60 min

Prizes (\$\$Cash\$\$) will be awarded in accordance with ABA policy after each race based on entry so if you finish top 3 stick around to claim your hard-earned dough.

COURSE PRE-RIDING

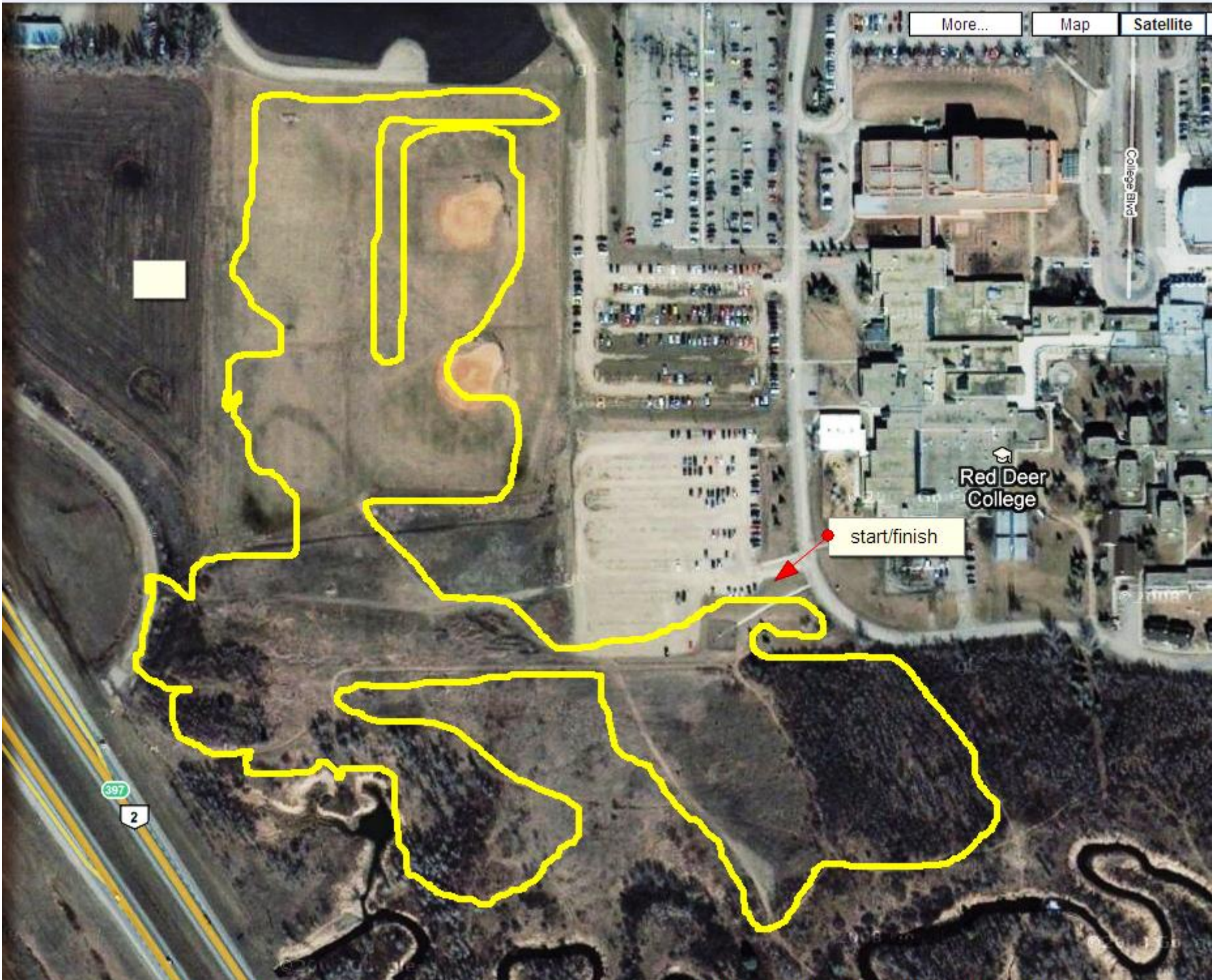
The course is open for training from 10:00am to 10:50 am. The course will be closed during the races. **Any rider on the course during another category's race will be fined.** Opening the course between races will be at the discretion of the Chief Commissaire.

Riders will be fined for the following:

- **Failure to wear a helmet while riding (pre/during/post race).**
- **Crossing the finish line twice.**
- **Racing in non club / team issue kit.**

Race Organizer:

Dan Surian dan.surian@rdc.ab.ca



More...

Map

Satellite

College Blvd

Red Deer College

start/finish

397

2